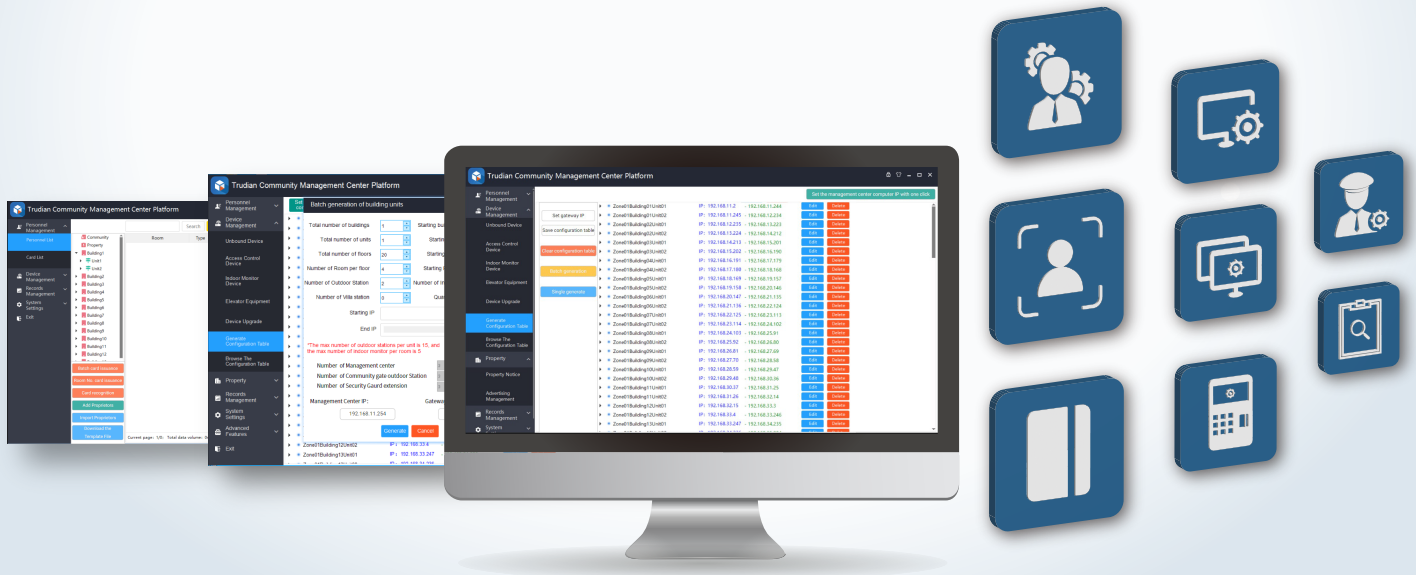


Trudian Community Management Center Platform



Trudian Community Management Center Platform is a software tailored for overseeing video intercom devices within a community. It boasts a user-friendly interface accompanied by a comprehensive user manual for easy navigation. With a focus on simplicity, this software provides a suite of features dedicated to efficient management of access control devices in a community setting.

A standout feature is its personnel management module, enabling users to oversee user information. It also encompasses tasks like facial recognition data entry and issuing elevator cards & access cards. This software facilitates bulk card issuance, simplifying the management of extensive user databases.

Designed with multi-computer management across various centers, it's particularly well-suited for larger communities. It facilitates unbound device operation, enables the addition of access control devices and elevator equipment, and allows for the editing of card information. Notably, the software accommodates property management functions and supports record viewing.

Features



Personnel management module

This platform affords users the capability to seamlessly import, meticulously edit, and efficiently manage diverse aspects of user information, thereby providing a comprehensive suite of functions for user data administration.



Facial recognition data entry

Allows to upload and record user faces for access control purposes. Users can choose to take a photo or select a photo to upload and record the face, making it easy to manage large numbers of users.



Card issuance

It empowers users to issue diverse card types, encompassing elevator and room number cards, with the added convenience of batch issuance. Users can conveniently review card issuance details through the "Card Issuance Preview Table" and "Card Issuance Log."



Device management

Enables users to manage access control devices, including adding, deleting, and modifying device information. Users can also remotely restart devices and set sector permissions.



Multiple management centers

Facilitates the synchronization of management center data across various computers, allowing users to input same parameters for seamless sharing. Furthermore, users have the option to switch between usage scenarios, choosing between "Single Management Center" and "Multiple Management Centers" as needed.



Outdoor station permission setting

Enables users to configure permissions for outdoor access control devices, including the ability to perform batch issuance of access rights, batch issuance of sector passwords, and batch issuance of independent permissions.



Property management

Facilitates users in the administration of property-related responsibilities, encompassing activities like dispatching property notice and overseeing advertising initiatives.



Record viewing

Allows users to view various types of records, such as door open records, call records, security records, and alarm records.

Specifications

Minimum Configuration	CPU: 2.4Ghz; Memory: 2G; Hard disk: 1GB remaining space
Recommended Configuration	CPU: 2.4Ghz; Memory: 4G; Hard disk: 10GB remaining space
Supported OS	Windows 7 / 8 / 8.1 / 10 / 11 (32/64-bit)
System Frame	.NET Framework 4.5.1
Database	SQLite

Website: www.trudian.com/en/

HQ Add: Farbell Technology Park, Yixian Road, Nanlang, Cuiheng New District, Zhongshan City, Guangdong Province, China. Zip Code: 528451

WhatsApp: +852 5512 8165

E-mail: sales@trudian.net

Scan Here to Follow Trudian's Latest News

