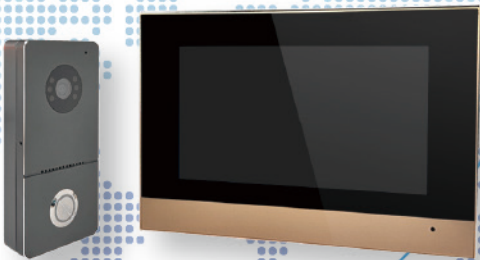




TD-D1R88 2-Wire IP Video Intercom Kit User Manual



1 Specifications

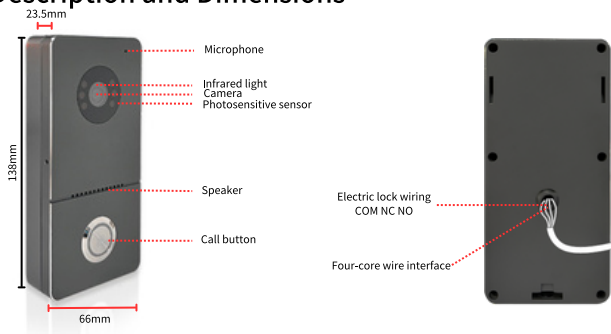
Outdoor Phone

Image Effects	Two million 1080P, 140 degree horizontal angle
Nightvision	IR CUT switching, color without color bias, night vision black and white image
Unlock	Connected to magnetic lock or electric lock, indoor monitor has latch delay time setting

7-inch capacitive touch 1024*600 IPS Indoor Monitor

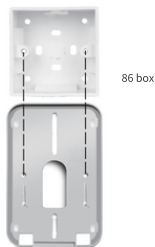
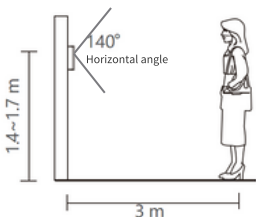
Connection	Connect up to 2 outdoor phones and 6 indoor monitors, indoor monitors can be interconnected
Network	Indoor monitor connected to 2.4G WiFi
Power	12V 2A power adapter, four-core cable to connect indoor monitor and outdoor phone at the same time power supply
Functions	Intercom, photo, video, unlock, visitor record, motion detection and calendar display Adjust brightness, contrast and color, latching delay adjustment, multi-language OSD menu
Extended Memory	Internal TF card to save automatic photo, video or message

2 Description and Dimensions

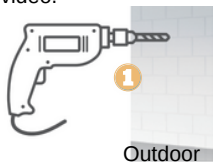


3 Installation Schematic

Install the outdoor phone at a height of 1.4~1.7m above the ground, avoiding sun and rain as much as possible. Fixed to wall, board, door with 2 screws or adhesive tape, also can be installed on the 86 box.



1. Drill holes for passing through the 4-core cable, it connects the outdoor phone and indoor monitor, interconnecting audio and video.



Outdoor



Outdoor



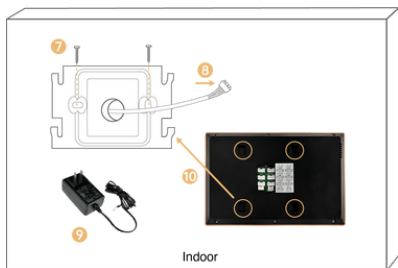
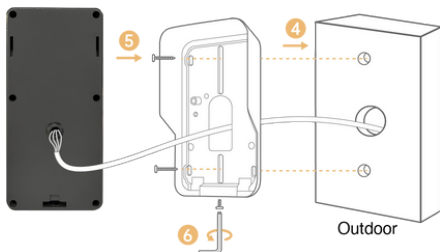
Indoor

2. Remove the screws of the waterproof cover with a hexagonal screwdriver.

3. Separate waterproof cover and outdoor phone.



4. Pass the 4-core wire through the hole in the wall.
5. Secure the waterproof cover with two screws.
6. Put the outdoor phone in a waterproof cover and fix the bottom screw.
7. Screw the wall bracket for fixing the indoor monitor.
8. Connect the other end of the 4-core cable to Door1 or Door2 of the indoor monitor.
9. Connect 12V 2A power supply to the indoor monitor.
10. Hang the indoor monitor on the wall bracket.



4 Connect the outdoor phone and indoor monitor

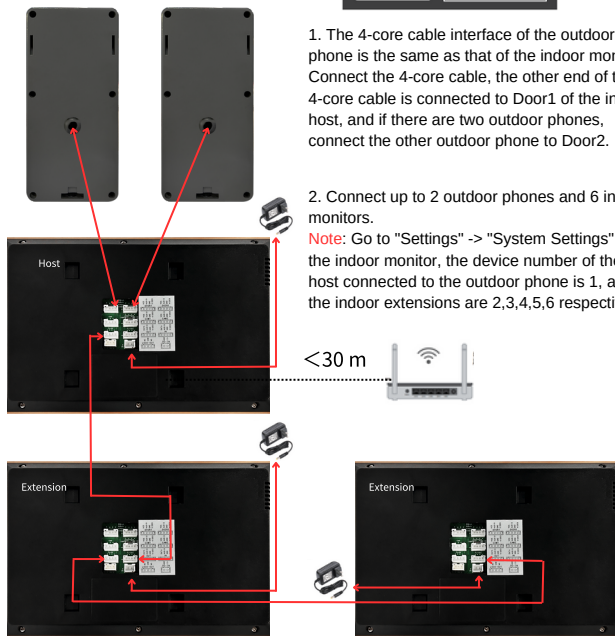
COM NC NO V A G P



1. The 4-core cable interface of the outdoor phone is the same as that of the indoor monitor. Connect the 4-core cable, the other end of the 4-core cable is connected to Door1 of the indoor host, and if there are two outdoor phones, connect the other outdoor phone to Door2.

2. Connect up to 2 outdoor phones and 6 indoor monitors.

Note: Go to "Settings" -> "System Settings" of the indoor monitor, the device number of the host connected to the outdoor phone is 1, and the indoor extensions are 2,3,4,5,6 respectively.



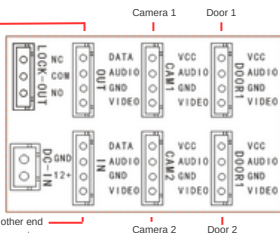
Door1, Door2:

Connect the 4-core cable, and the other end of it connects to the outdoor phone

Out: Connect the 4-core cable, and the other end of it is connected to the In of the next extension

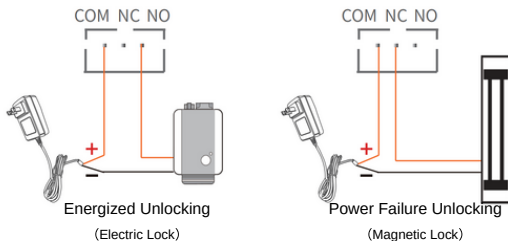
Power interface, connect to 12V 2A power supply

In: Connect the 4-core cable, the other end of it is connected to the Out of the previous indoor monitor



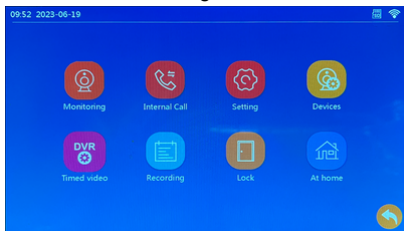
5 Connect lock schematic

Note: The electric lock does not distinguish between positive and negative, unlocking voltage 12V, please check the electric lock unlocking power specifications purchased separately, the latch delay time please set in the indoor host.



6 Introduction to indoor monitor operation

1. Tap the screen to enter the settings screen.



System Settings:

Device number: The indoor monitor connected to the outdoor phone is set to 1, and the extensions are numbered 2, 3, 4, 5, 6 in that order.

Standby clock display switch	on/off
Language setting	English, Russian, French, Spanish, German and Simplified Chinese
Key tone	On/Off
Ringback tone switch	On/Off

Outdoor Phone Settings:

Note: The following settings are configured on the host, the extensions are synchronized with the host settings.

Please check whether Door1 or Door2 is connected, or whether there are two outdoor phones connected.

Enable switch	If only one outdoor phone is connected, please turn off the enable for the one that is not connected.
Latch delay time	After connecting the electric lock, please set the corresponding lockout time.
Record mode	When someone calls, motion detection trigger, select automatic video or photo.
Motion detection switch	To turn on or off motion detection
Motion detection sensitivity	Set low / medium / high
Motion detection time	After the triggering motion detection, set the recording time
Message switch	Turn on/off the function of leaving a message
Message time	Setting the time to leave a message
Signal system	Automatic detection the signal system: PAL / NTSC / automatic
Signal type	The outdoor phone is D1, if you connect other analog outdoor phone, please select auto-detection in the signal system, so that the outdoor phone can be used normally
Ringling settings (extension can set the ringling tone)	Set the ringling tone for 3 time periods, ringling time, 10 kinds of ringling tone to choose one, ringling volume

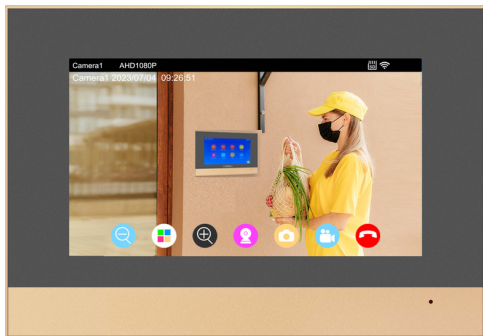
Advanced Settings:

Format SD card, factory settings, software upgrade, system reboot

System Information:

Software version, release date, SD space left, UUID

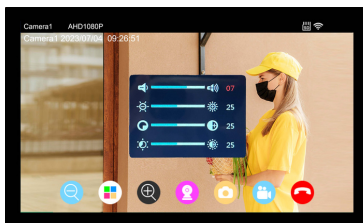
2. Click "Monitor" or press the outdoor phone to call over the interface.



This icon appears when you click to monitor the outdoor phone to switch the outdoor phone



Set Volume, Brightness, Contrast, Saturation



This icon appears when you click on the "Call" icon, indicating that a call is in progress, and when you click on it again, the call is still in progress



Zoom out



Zoom in



Photo



Unlock



Video



Answer



Hang up

Transfer call, the same position as the icon of switching the outdoor phone, call transfer and internal call are two different forwarding, after answering the outdoor phone call, this icon appears, if you find the visitor is looking for other indoor monitor , you can transfer to the others.



3. Click "Transfer call" to call other indoor monitors, which is equivalent to internal call.



4. Click "Record" to display call records, message records, motion detection records, you can view pictures or Long press the record file to delete, delete all, read all.



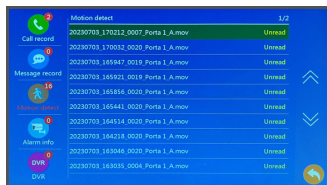
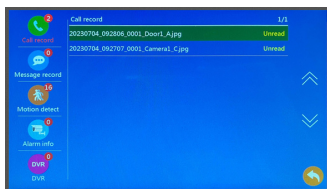
Call records



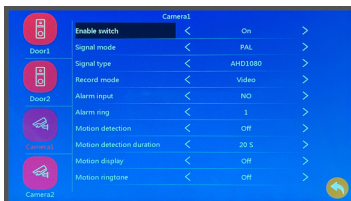
Message records



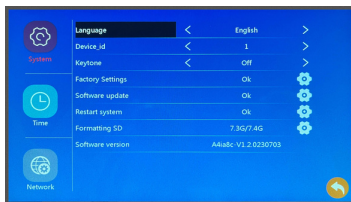
Motion detection records



5. Click "Devices" to manage the parameters of the doors and cameras settings.



6. Click "Setting" to set parameters such as language, date, etc.

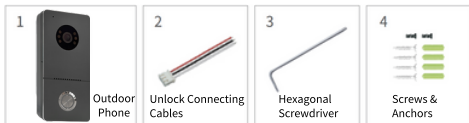


7. Click "Home" mode to switch 3 modes, the indoor monitor should be inserted TF card, and turn on the message switch.

- ① At home: After the visitor presses the doorbell, the indoor monitor will ring and the phone will receive the notification, click on the notification and answer, if there's no answer, the visitor will be prompted to leave a message.
- ② Not at home: After the visitor presses the doorbell, the mobile phone APP will receive the notification, click the notification and answer.
- ③ Sleep: When the visitor presses the doorbell, the outdoor phone and indoor monitor will not ring or beep, and the mobile phone APP will receive the notification, you can answer by clicking the notification.

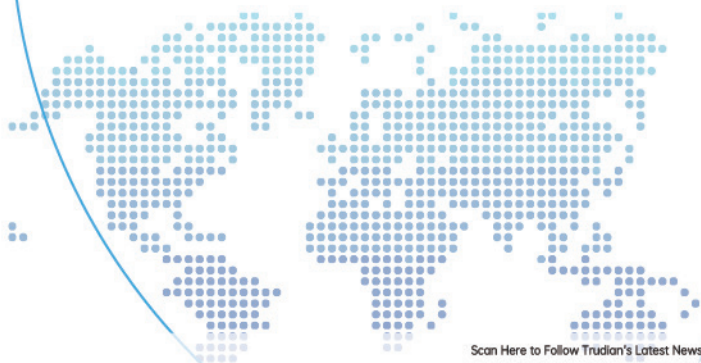
7 Packing List

Outdoor Phone part



Indoor Monitor part





Website: www.trudian.com/en/
Address: Farbell Technology Park, Yixian Road, Nanlang,
Cuiheng New District, Zhongshan City, Guangdong Province,
China. Zip Code: 528451
E-mail: sales@trudian.net

Scan Here to Follow Trudian's Latest News

