



TD-D1R88-TY 2-Wire IP Video Intercom Kit User Manual



1 Specifications

Outdoor Phone

Image Effects	Two million 1080P, 140 degree horizontal angle
Nightvision	IR CUT switching, color without color bias, night vision black and white image
Unlock	Connected to magnetic lock or electric lock, indoor monitor has latch delay time setting

7-inch capacitive touch 1024*600 IPS Indoor Monitor

Connection	Connect up to 2 outdoor phones and 6 indoor monitors, indoor monitors can be interconnected
Network	Indoor monitor connected to 2.4G WiFi
Power	12V 2A power adapter, four-core cable to connect indoor monitor and outdoor phone at the same time power supply
Functions	Intercom, photo, video, unlock, visitor record, motion detection and calendar display Adjust brightness, contrast and color, latching delay adjustment, multi-language OSD menu
Extended Memory	Internal TF card to save automatic photo, video or message

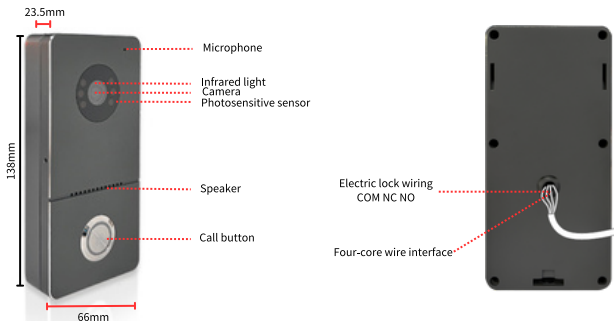
Tuya APP



Connect to 20 APP mobile users, users can talk to visitors anytime, anywhere, can use APP for photo, video and monitoring, unlocking, cloud storage

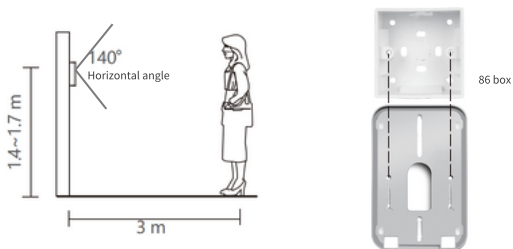
Alarm	Snapshot photos are pushed to the message center after a call or detection of a humans
Replay	Video recording of a period of time after a call or motion detection

2 Description and Dimensions

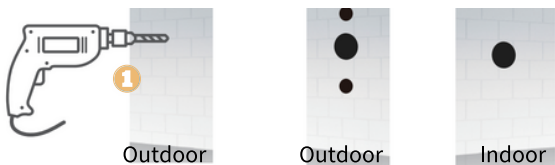


3 Installation Schematic

Install the outdoor phone at a height of 1.4~1.7m above the ground, avoiding sun and rain as much as possible. Fixed to wall, board, door with 2 screws or adhesive tape, also can be installed on the 86 box.



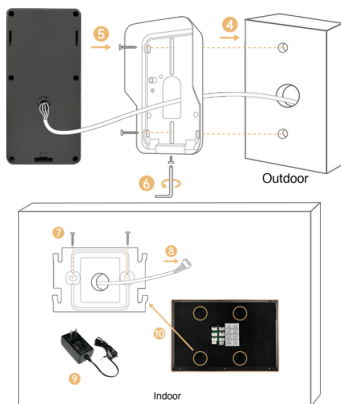
1. Drill holes for passing through the 4-core cable, it connects the outdoor phone and indoor monitor, interconnecting audio and video.



2. Remove the screws of the waterproof cover with a hexagonal screwdriver.
3. Separate waterproof cover and outdoor phone.



4. Pass the 4-core wire through the hole in the wall.
5. Secure the waterproof cover with two screws.
6. Put the outdoor phone in a waterproof cover and fix the bottom screw.
7. Screw the wall bracket for fixing the indoor monitor.
8. Connect the other end of the 4-core cable to Door1 or Door2 of the indoor monitor.
9. Connect 12V 2A power supply to the indoor monitor.
10. Hang the indoor monitor on the wall bracket.



4 Connect the outdoor phone and indoor monitor

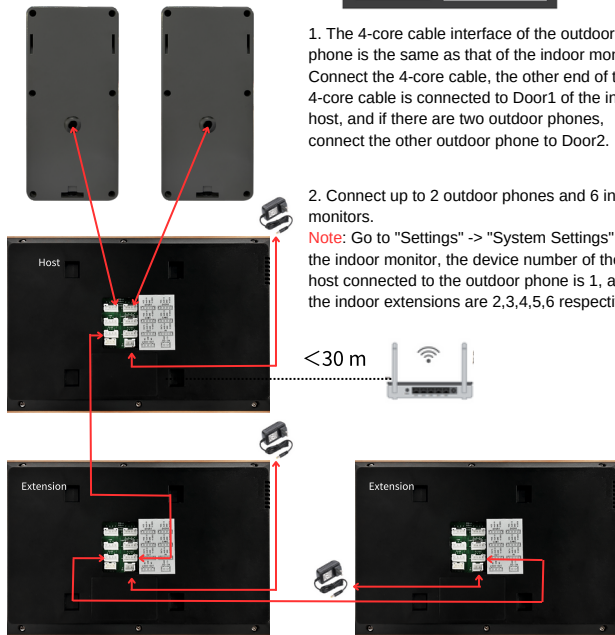
COM NC NO V A G P



1. The 4-core cable interface of the outdoor phone is the same as that of the indoor monitor. Connect the 4-core cable, the other end of the 4-core cable is connected to Door1 of the indoor host, and if there are two outdoor phones, connect the other outdoor phone to Door2.

2. Connect up to 2 outdoor phones and 6 indoor monitors.

Note: Go to "Settings" -> "System Settings" of the indoor monitor, the device number of the host connected to the outdoor phone is 1, and the indoor extensions are 2,3,4,5,6 respectively.



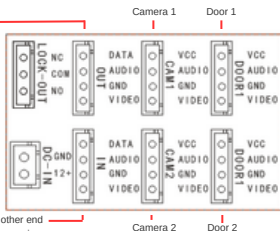
Door1, Door2:

Connect the 4-core cable, and the other end of it connects to the outdoor phone

Out: Connect the 4-core cable, and the other end of it is connected to the In of the next extension

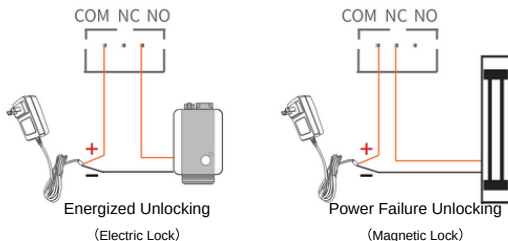
Power interface, connect to 12V 2A power supply

In: Connect the 4-core cable, the other end of it is connected to the Out of the previous indoor monitor



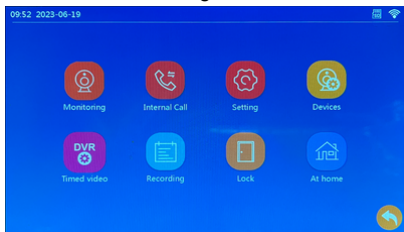
5 Connect lock schematic

Note: The electric lock does not distinguish between positive and negative, unlocking voltage 12V, please check the electric lock unlocking power specifications purchased separately, the latch delay time please set in the indoor host.



6 Introduction to indoor monitor operation

1. Tap the screen to enter the settings screen.



System Settings:

Device number: The indoor monitor connected to the outdoor phone is set to 1, and the extensions are numbered 2, 3, 4, 5, 6 in that order.

Standby clock display switch	on/off
Language setting	English, Russian, French, Spanish, German and Simplified Chinese
Key tone	On/Off
Ringback tone switch	On/Off

Outdoor Phone Settings:

Note: The following settings are configured on the host, the extensions are synchronized with the host settings.

Please check whether Door1 or Door2 is connected, or whether there are two outdoor phones connected.

Enable switch	If only one outdoor phone is connected, please turn off the enable for the one that is not connected.
Latch delay time	After connecting the electric lock, please set the corresponding lockout time.
Record mode	When someone calls, motion detection trigger, select automatic video or photo.
Motion detection switch	To turn on or off motion detection
Motion detection sensitivity	Set low / medium / high
Motion detection time	After the triggering motion detection, set the recording time
Message switch	Turn on/off the function of leaving a message
Message time	Setting the time to leave a message
Signal system	Automatic detection the signal system: PAL / NTSC / automatic
Signal type	The outdoor phone is D1, if you connect other analog outdoor phone, please select auto-detection in the signal system, so that the outdoor phone can be used normally
Ringling settings (extension can set the ringling tone)	Set the ringling tone for 3 time periods, ringling time, 10 kinds of ringling tone to choose one, ringling volume

Network settings:

(configured on the Host, not supported by extensions)

The indoor monitor connects to WiFi, supports EZ Mode and AP Mode, check "**9 Adding Devices**" below for details.

Advanced Settings:

Format SD card, factory settings, software upgrade, system reboot

System Information:

Software version, release date, SD space left, UUID

2. Click "Monitor" or press the outdoor phone to call over the interface.



This icon appears when you click to monitor the outdoor phone to switch the outdoor phone



Set brightness, contrast, saturation



This icon appears when you click on the "Call" icon, indicating that a call is in progress, and when you click on it again, the call is still in progress



Zoom out



Zoom in



Photo



Unlock



Video



Answer



Hang up



Transfer call, the same position as the icon of switching the outdoor phone, call transfer and internal call are two different forwarding, after answering the outdoor phone call, this icon appears, if you find the visitor is looking for other indoor monitor, you can transfer to the others.



3. Click "Transfer call" to call other indoor monitors, which is equivalent to internal call.



4. Click "Record" to display call records, message records, motion detection records, you can view pictures or Long press the record file to delete, delete all, read all.



Call records



Message records



Motion detection records

5. Click "Home" mode to switch 3 modes, the indoor monitor should be inserted TF card, and turn on the message switch.

- ① At home: After the visitor presses the doorbell, the indoor monitor will ring and the phone will receive the notification, click on the notification and answer, if there's no answer, the visitor will be prompted to leave a message.
- ② Not at home: After the visitor presses the doorbell, the mobile phone APP will receive the notification, click the notification and answer.
- ③ Sleep: When the visitor presses the doorbell, the outdoor phone and indoor monitor will not ring or beep, and the mobile phone APP will receive the notification, you can answer by clicking the notification.

7 Download and install the App

1. Android system in the Mobile Assistant to download, iPhone, iPad search in App Store to download "Tuya Smart" or "Smart Life".
2. Scan the QR code to download the App



8 Register Account and Login



1. For the first time to use "Tuya Smart" or "Smart Life" App, please click Register.
2. Choose your phone number or email address to authorize login. You can also authorize login via WeChat or QQ account.
3. In order to ensure the normal use of APP functions, please allow and open all permissions of APP when installing APP!
4. Logging into APP, you can create a family and then add devices. How to create a family:

Click "My" -> "Home Management" -> "Create a Home" , fill in the information and save. The setter will default to the home owner, the owner can set the administrators and normal members. After the home owner or administrators adds a device, the home members will automatically add the device. "Tuya Smart" or "Smart Life" is a large platform, you can add many kinds of smart products. After adding this device, all family members have an additional unlocking feature over shared accounts, and up to 20 administrators or home members can be added to a single home.

5. Video intercom is a device with high security level, you have to remove the device from the original account before you can bind it to another account.

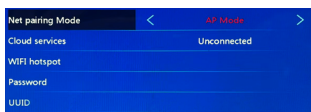
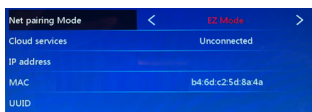
9 Adding Devices

Note that only the indoor host can connect to the Tuya Smart APP, and the extensions cannot be configured.

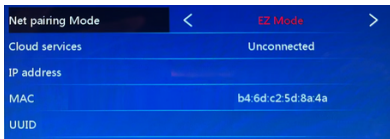
Click "Settings"  to enter "Network Settings"  to enter network configuration mode.

Indoor host has two network distribution modes

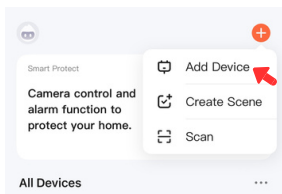
1. EZ Mode
2. AP Mode



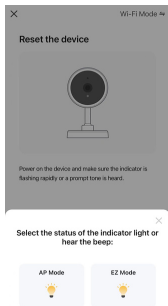
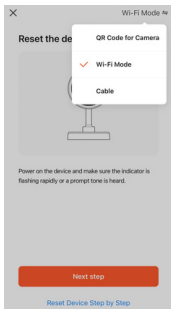
1. EZ Mode



- 1 Click "+" at the top right of the mobile app home page.
- 2 Select "Camera & Lock" -> "Smart Doorbell".




- 3 Select item 2, "Wi-Fi Mode". Then select "EZ Mode" in the pop-up window.
- 4 Confirm that the indoor monitor is in the EZ mode, confirmation the option, and then click "Next".



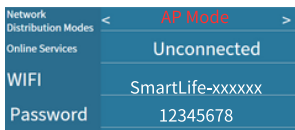
The doorbell only supports 2.4G WiFi, not 5G WiFi!

- 5 Select 2.4GHz WiFi, enter WiFi password and click "Next".
- 6 Enter and wait for "Scan device" -> About a minute or so later shows "Register to cloud" -> "Initialize the device".
- 7 After the connection is completed, it will show "Add successfully", you can change the device name, click "Finish" to enter the video interface.

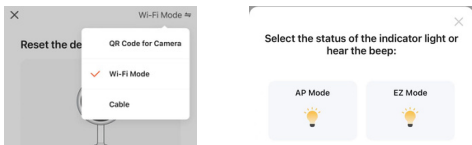
2. AP Mode

After selecting "AP Mode", please click "Back" icon , the indoor monitor will reboot, then go back to the network settings interface, you can see the WIFI hotspot SmartLife-XXXXXX, password is 12345678.

- 1 2 The steps of mobile app are the same as EZ Mode.



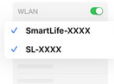
- 3 Select item 2, "Wi-Fi Mode". Then select "AP Mode" in the pop-up window.



- 4 Turn on the power, ignore the light or beep, click "Next". Same as the step 4 of EZ Mode.
- 5 Select 2.4GHz WiFi, enter WiFi password and click "Next". Same as the step 5 of EZ Mode.

Connect your mobile phone to the device's hotspot

1 Connect your phone to the hotspot shown below:



2 Go back and add devices.

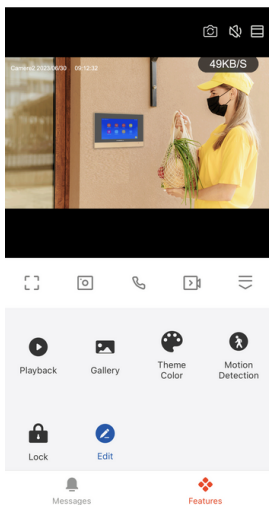
Go to Connect

- 6 Click the "Go to Connect" icon.
- 7 Select the hotspot provided by the indoor monitor, enter the password 12345678, and click back to APP after the connection is completed.
- 8 Enter and wait for "Scan device" -> About a minute or so later shows "Register to cloud" -> "Initialize the device".
- 9 After the connection is completed, it will show "Add successfully", you can change the device name, click "Finish" to enter the video interface.

Note: When the APP is unbound from the device, the device will reboot and need to wait for five minutes before re-binding again (the operation can only be performed on the APP)

10 View Real-time Video

Click on the device to enter the real-time screen, you can switch the outdoor phone, mute, screen zoom, full screen, hover window operation, take photo, intercom, video, unlock, playback, photo album. There are two theme colors, click the Theme Color to set.



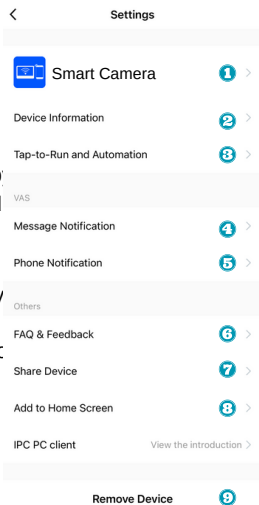
Messages: motion detection. If someone calls at the outdoor phone it will take a picture.

Motion Detection: Enables motion detection after clicking and will send a notification when a human is detected.

Lock: Unlock and save all unlocked time records.

Edit: Click to enter the function button management interface.

- 1 Modify icon, name, location
- 2 View IP address, ID, device time zone
- 3 Configure one or more device automation
- 4 The execution result of the intelligent scene you set can be notified in time by SMS. The device alarm can be alerted by SMS and set up in the message center after purchase.
- 5 Deliver specified notifications timely by phone call. Equipment alarm can be alerted by phone. After purchase, go to the message center to set up.
- 6 Please check the FAQ carefully, especially you are not skilled in the operation of the product or software.
- 7 Enter the phone number or email address of the user you want to share, click "Finish", but the shared user cannot unlock the device, add the user to your family in the home management to have the permissions.
- 8 Click the button at the bottom of the screen and choose "Add to Home Screen "
- 9 Remove the device, other phones will be able to reconnect the device

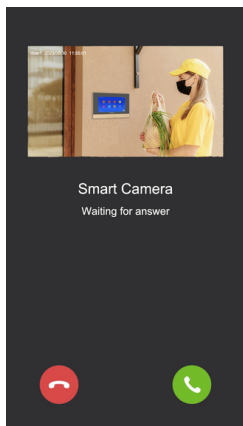


The computer side of the domestic login <https://protect.ismartlife.me> connects to this device.

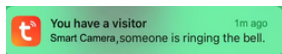
The computer side can intercom, take pictures, and record video.

11 Call and Motion Detection

1. Show Incoming Call after visitors press the call button



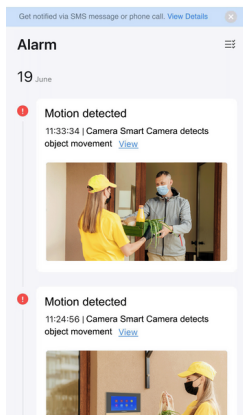
2. Push notifications in phone standby



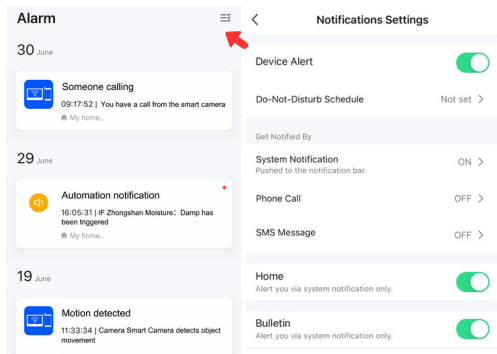
1. Click on the *Motion detected* will enter the Alarm.

2. Click on the *You have a visitor* will enter the real-time video.

Users can intercom, take pictures, video, and unlock the door



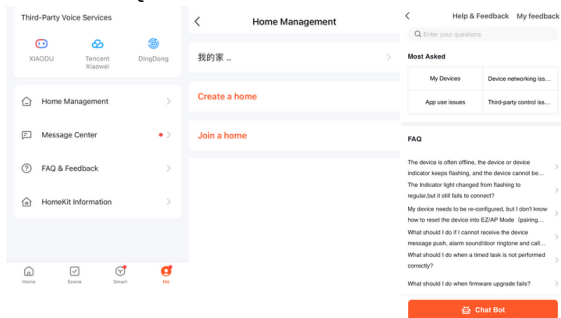
3. Click the "Settings" icon in the upper right corner to enter the message settings



12 Help and Services

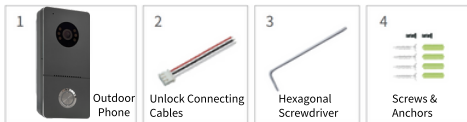
There are many Tuya smart products, users can click "My" to enter the services and help.

1. "Third-party Voice Services", you can choose multiple smart products to control by voice, and each third-party product has a detailed tutorial on how to connect.
2. "Home Management", you can create a home or join a home and set permissions.
3. Click on the "Message Center" to view alarm information.
4. Familiar with the use of APP, Device Operation, etc. can be viewed in the "FAQ & Feedback".



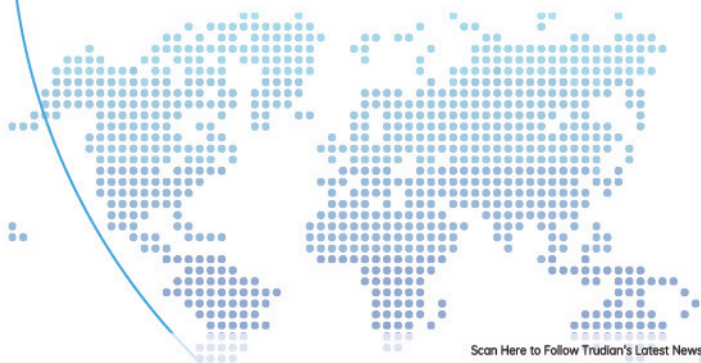
13 Packing List

Outdoor Phone part



Indoor Monitor part





Website: www.trudian.com/en/
Address: Farbell Technology Park, Yixian Road, Nanlang,
Cuiheng New District, Zhongshan City, Guangdong Province,
China. Zip Code: 528451
E-mail: sales@trudian.net

Scan Here to Follow Trudian's Latest News

